

☞ This Assignment includes an online component, which requires you to email me a code in advance of the due date of the assignment. The rest of the assignment can be completed on this handout, in pencil where appropriate. Please write your UNI on the top of all pages.

1: Chord recognition drill

<http://www.musictheory.net/exercises/chord/brwy9y9rybnyyny>

Complete the linked challenge with 90% accuracy (i.e. 9/10) within 1 minute for the full 20 points. If your best time exceeds 1 minute, then your score for this question will be scaled accordingly.

You must email me a verification code, which confirms your score, before this assignment is due. Failure to email me the code will result in a 0 for this question. Please email me in good time if you are having difficulty using the web resource.

2: Kinds of chords

(10)

Complete the tables below

Table 1: Question 2 (a)

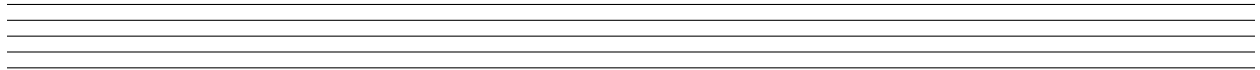
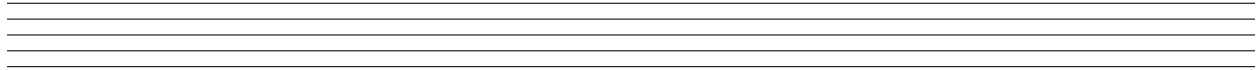
Triad quality	Quality of lower third	Quality of upper third
major		
augmented		
diminished		
	minor	major

Table 2: Question 2 (b)

Seventh chord quality	Quality of lower triad	Quality of seventh	Chord name
major-major			
			minor seventh
fully diminished			
	diminished	minor	
major-minor			

3: Write**(20)**

- (i) Bass, first inversion C major triad
- (ii) Treble, root position B \flat major triad
- (iii) Treble, root position G dominant seventh chord
- (iv) Bass, root position F \sharp minor triad
- (v) Treble, first inversion E \flat augmented triad
- (vi) Bass, first inversion D minor triad
- (vii) Alto, third inversion C \sharp fully diminished seventh chord
- (viii) Treble, root position D \flat major triad



4: Understand**(20)**

Rewrite the chords from question 4 above, using the clefs and key signatures provided here below. You must take care to rewrite the chords in the order in which they occur, given by the roman numerals in the above question.

The presence of key signatures generally affects the accidentals you use to form each chord; you will be penalized for incorrect accidentals.



5: Recognize

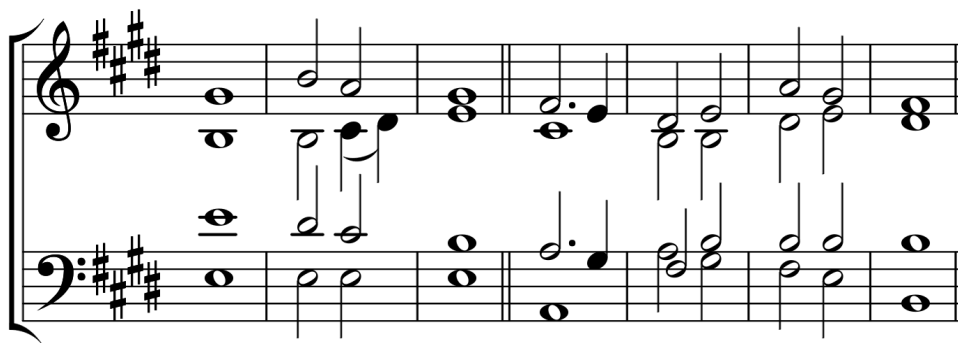
(20)

Provide root name, quality, and inversion, for each of these chords.



6: Score-reading

(30)



(a) Provide full labels for each chord in the sequence of chords above (i.e. root name, quality, and inversion)

(b) Write out all E major triads that occur in this passage in the exact registers in which they occur, in SATB format. Use stem direction to indicate the voice parts.

(c) Write out all E major triads from (b) now in closed position, using the treble clef only (i.e. prepare a reduction of the triads from part (b)). Ensure that the registral ordering of the pitches is preserved in your reduction.
